

**Doc WM91**

# **Vent Assembly Kit installation instructions**

- ✓ **WM 5903**
- ✓ **WM 5913**
- ✓ **WM 5914**

# INSTALLING THE CAM-LOC FITTING

**Caution:** This installation is not difficult but please follow these basic instructions.

When working with ABS glue, you only have one shot at getting it right

## Preparation, Tools and Materials

1. Select cutting tools such as small fine tooth hack saw or snip pliers.
2. Select finishing tools - a fine tooth file, a sanding pad and sand paper.
3. Clean, dry cloth and a pair of latex gloves.
4. Small can of ABS cement with applicator brush; all-purpose glue is OK provided ABS is included on label. **Do NOT use PVC, CPVC glue**



1. **Make sure your drain valves are closed;** remove the sewer cap and tether, clear any drip and dry out plumbing.
2. Cut off the four prongs used for the bayonet fitting
3. File or sand the cut off surfaces flush and smooth. Sand all around mating surface to prep. ready for later gluing step.

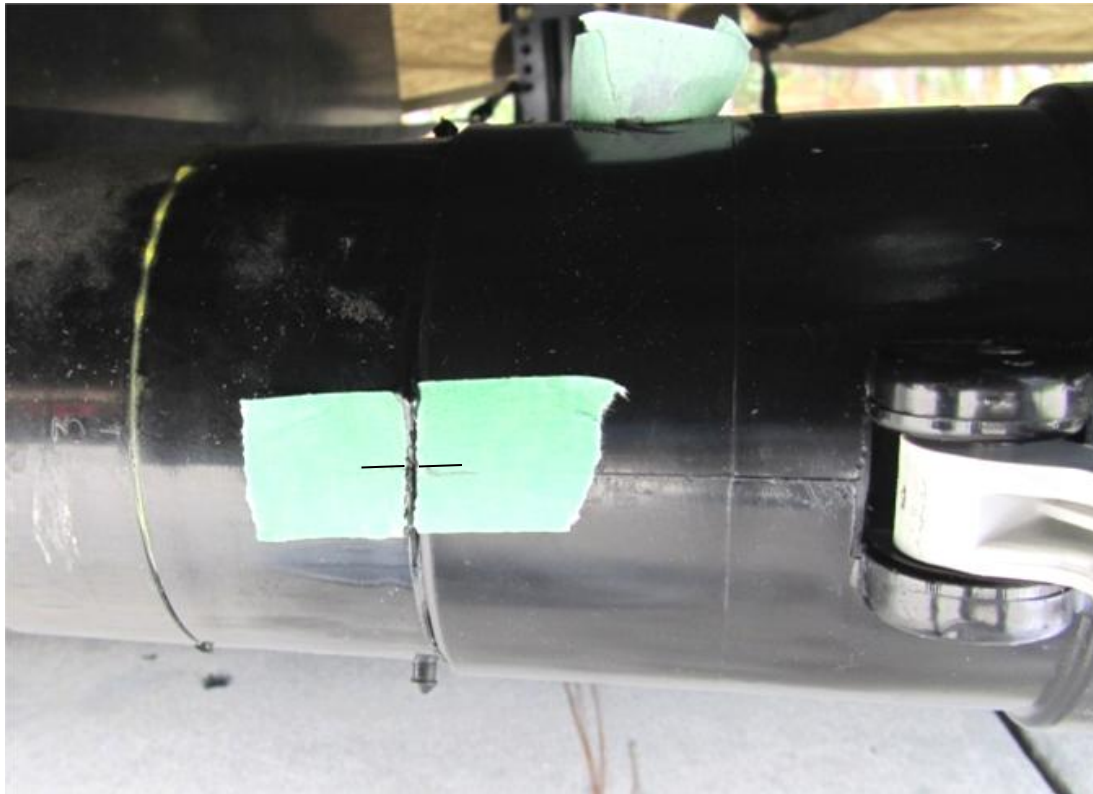


4. Temporarily place the Female Cam Loc fitting over the cut end and see it fits. Orient it so levers are reachable and fully extendable.
5. Mark the Air Release Valve (ARV) hole outline intercept on the cut pipe end – it will be roughly a partial ( $\frac{1}{2}$ ) circle
6. Relief cutout for Air Release Valve allowing  $\frac{1}{8}$ " over cut to clear the ARV threaded shank; smoothen out any burrs.



7. Dry fit the Female Cam Loc fitting over the cut end; align the cut out and ARV threaded hole. Dry fit the ARV to ensure it can be threaded without obstruction.
8. Alignment mark across with masking tape or white marker pen.

**Important:** *During gluing process this mark will be used to orient the fitting precisely. Try out the insertion and alignment process few times before actual gluing. It should be smooth and easy to orient. Extra sanding may be needed on the cut pipe end.*



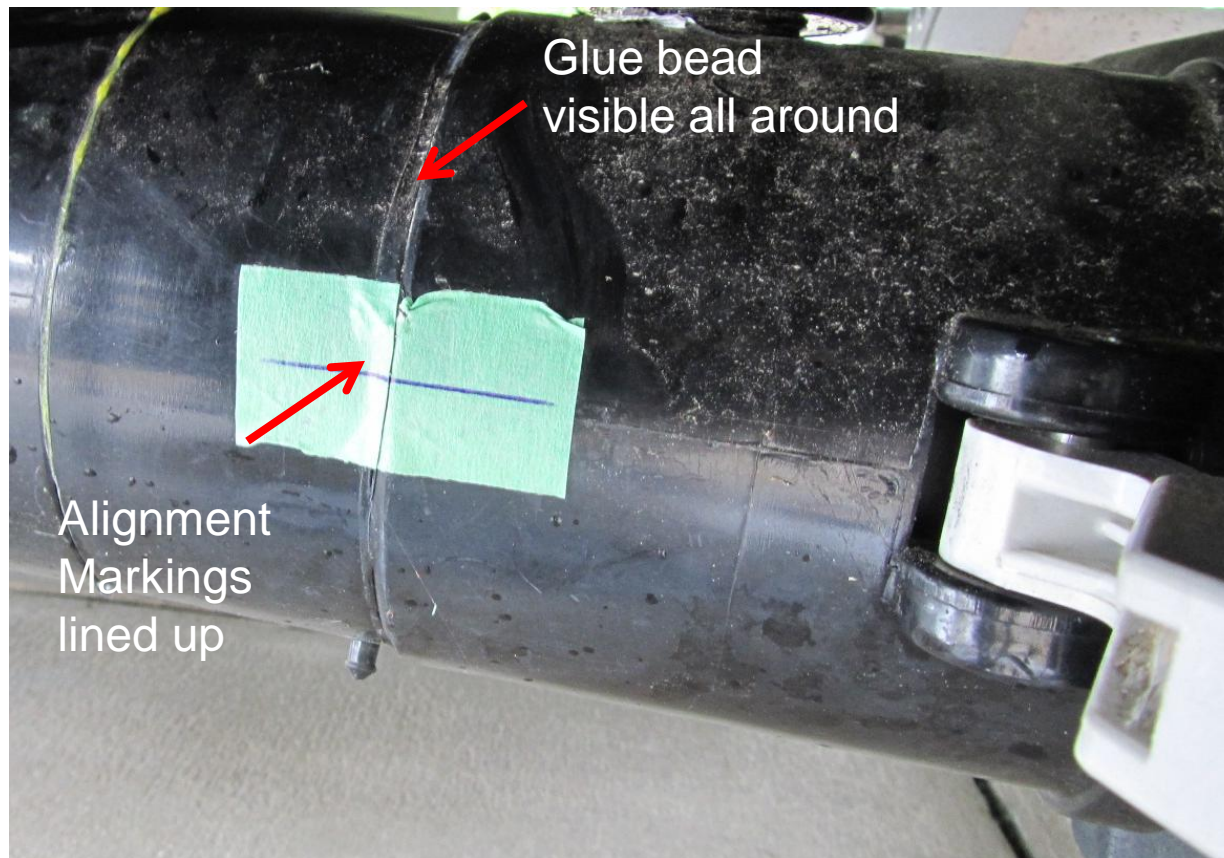
9. Remove the ARV

10. Use masking tape to protect  $\frac{3}{4}$ " hole to prevent glue migration on threads

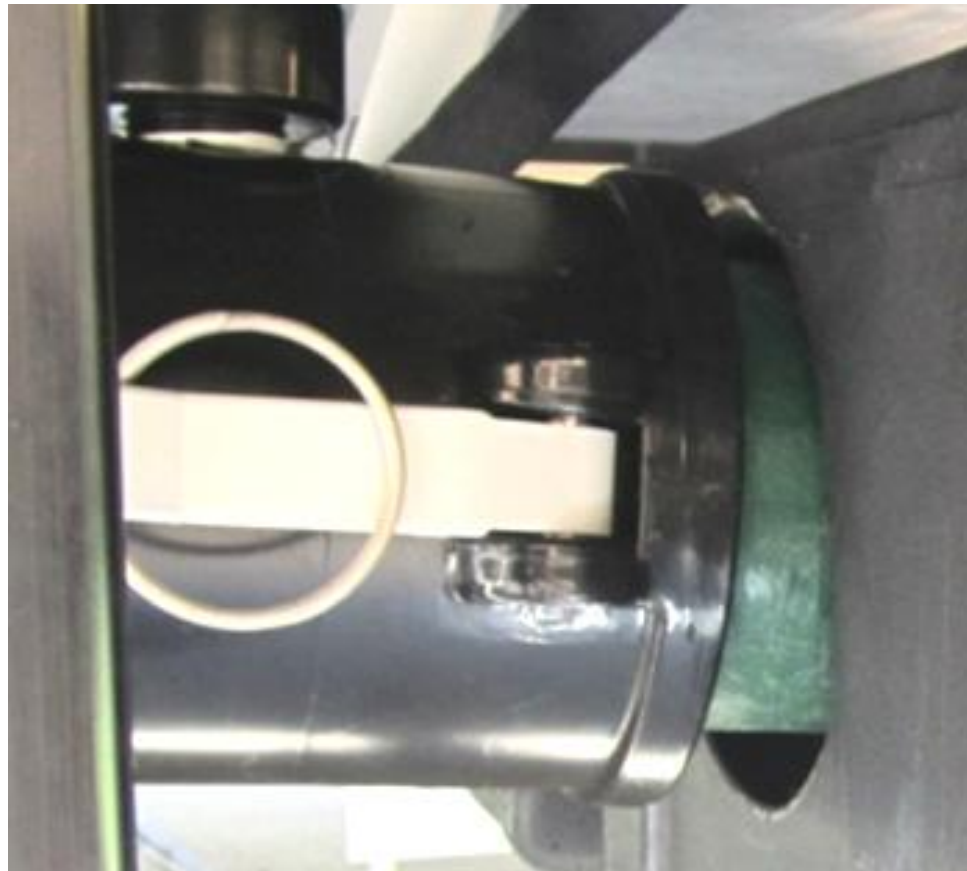




11. Remove the Female Cam Loc and sand the inside mating surface to prepare for gluing. Wipe all sanded surfaces with a clean dry cloth.
12. Apply a light film of glue to both the pipe cut end and the fitting sanded surface ensuring complete coverage
13. Insert the fitting, turning slightly each way to spread the glue, till fully inserted and alignment markings lined up
14. Allow a minimum of 30 Minutes cure time.



17. Install the hose and ensure everything fits well.
18. If the system is installed with Enclosure, hose cuff must be all around clear of side wall hole. Adjust enclosure mounting if required.
19. **Optional:** Hole side edge may be covered with edge beading or foam strip for extra protection.





20. Remove the protective masking tape from the threaded hole
21. Install Air Release Vent using Teflon tape or plumber's putty– it MUST BE VERTICAL – there are few options.
22. If 5" or more head room available, the simplest is to install ARV directly to fitting



23. If not enough head room, use the fittings, tubing and 90 deg elbows included in the kit as needed to extend out and relocate the Air Release Valve VERTICAL to where room is available, preferably choosing to keep Air Release Valve outside the RV
24. Sticking the Air Release Valve into an opening in the belly pan is not advisable to prevent odors making way inside the RV

*Pictures below illustrate the ARV relocated to where head room is available. Depending on your RV, you may need additional fittings to achieve the same result.*



***Congratulations on your successfully installing the Vent Assembly Kit for easy Extend and Retract of the Waste Master permanently connected hose system! Now you can enjoy the ultimate in convenience.***

***Questions?    Comments?    Need Help?***

***Call Toll Free: 877-787-8833***