

Doc WM87

Waste Master Pre-Install Quick Check

✓ **Motor Coaches – Class A**



✓ **Motor Homes – Class C**



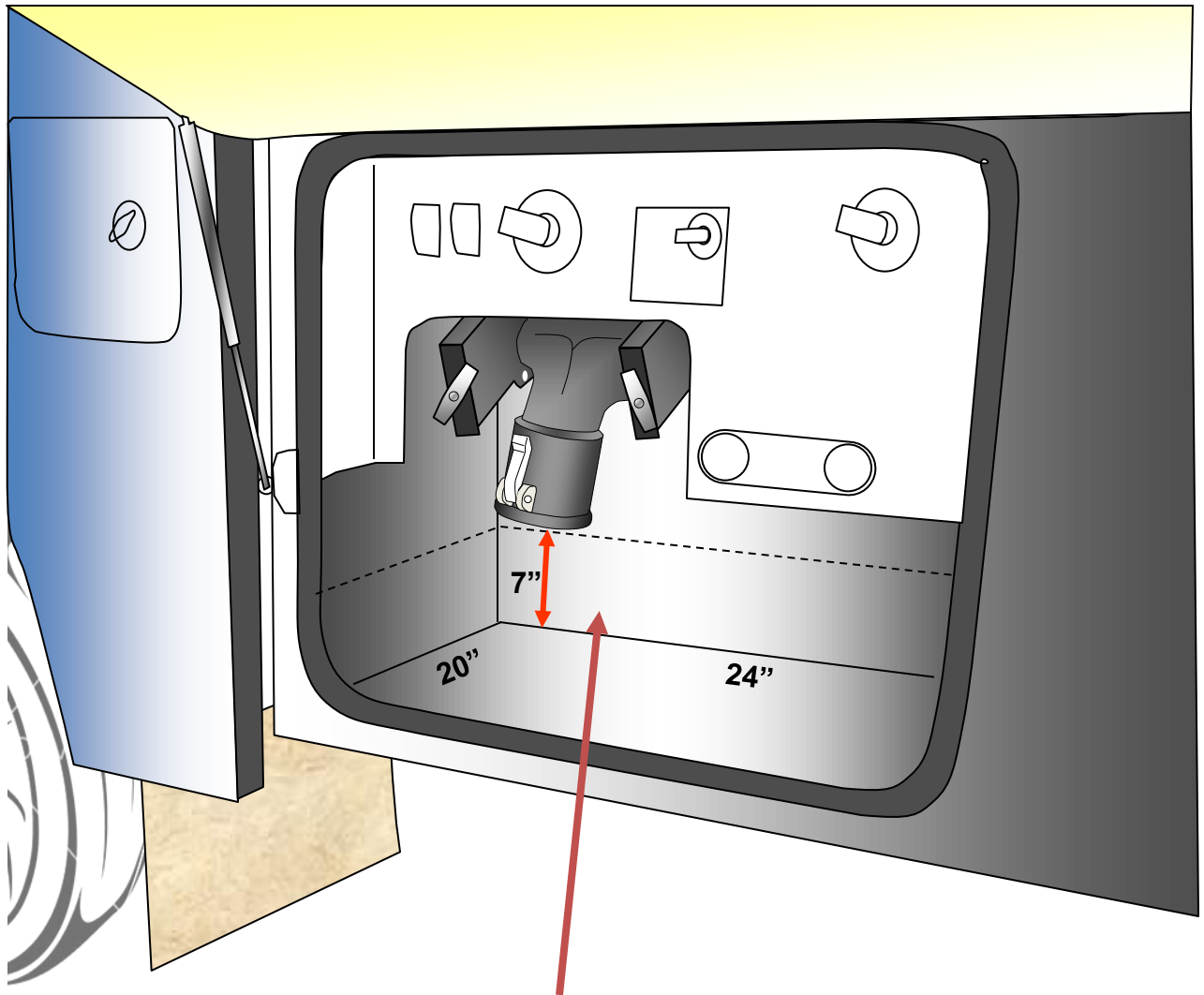
✓ **Camper Vans – Class B+**



✓ **Van Conversions – Class B**



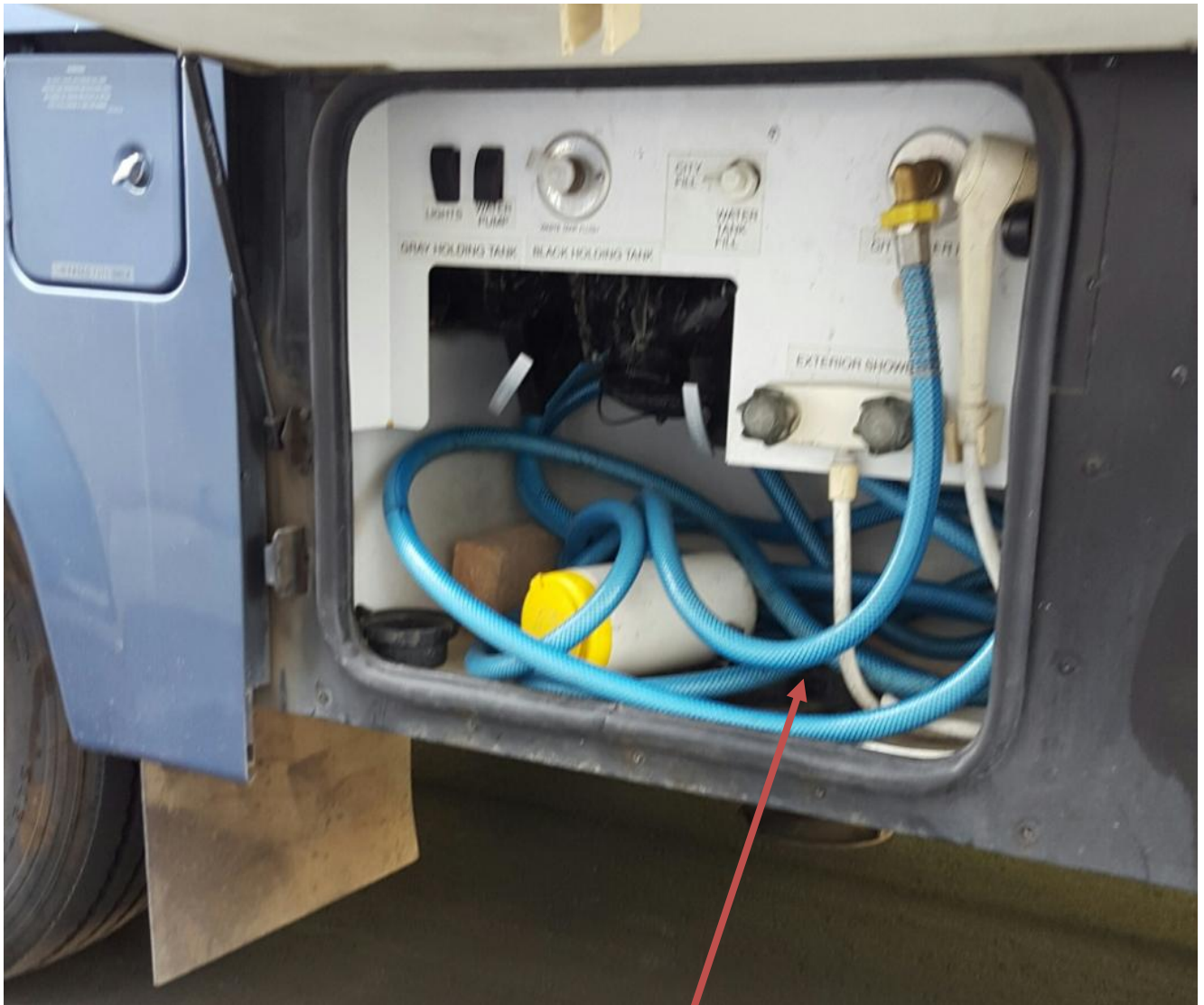
**Waste Master Permanently Connected Sewer System
at a glance – ONE Simple observation to determine
Waste Master install in a Motor Coach Bay.**



**Min. clear space required for WM Hose System install
is 24"W x 20"D x 7"H below plumbing terminations.
female Cam Loc shown vertical may be installed
horizontal in smaller bays to save space.**

**IF this is met, then YES! Waste Master can be EASILY
installed.**

***BEFORE* WM Install**



Example of a bay that easily meets minimum space requirement for in-bay hose storage.

AFTER WM Install



Waste Master Permanently Connected Hose System installed with in-bay hose storage. Vent Kit seen on female Cam Loc fitting.

Another example of Waste Master Permanently Connected Hose System with in-bay hose storage. Vent Kit on female Cam Loc fitting (lower picture).

AFTER WM Install



Example of Waste Master installed in restricted space with horizontal female Cam Loc. In some bays this may relieve room for in-bay storage. In this example, hose (not shown) is connected when required but stored outside bay.

AFTER WM Install



**Questions?
Special or unique configuration?**

<p>CUSTOM INSTALLS NOW AVAILABLE in HOLLISTER, CA</p>	
	<p>LET US DESIGN THE PERFECT RV WASTE SYSTEM FOR YOU</p> <p>We'll make Dumping your Tanks as Easy as Putting Gas in your Car!</p> <p>877 787 8833</p>

We are able to assess your situation and suggest if modifications are feasible to install Waste Master System.

Call Toll Free 1-877-787-8833 and email pictures of your RV bay for advice.