

Doc WM91

Vent Assembly Kit installation instructions

✓ **WM 5903**

✓ **WM 5913**

✓ **WM 5914**



INSTALLING THE CAM-LOC FITTING

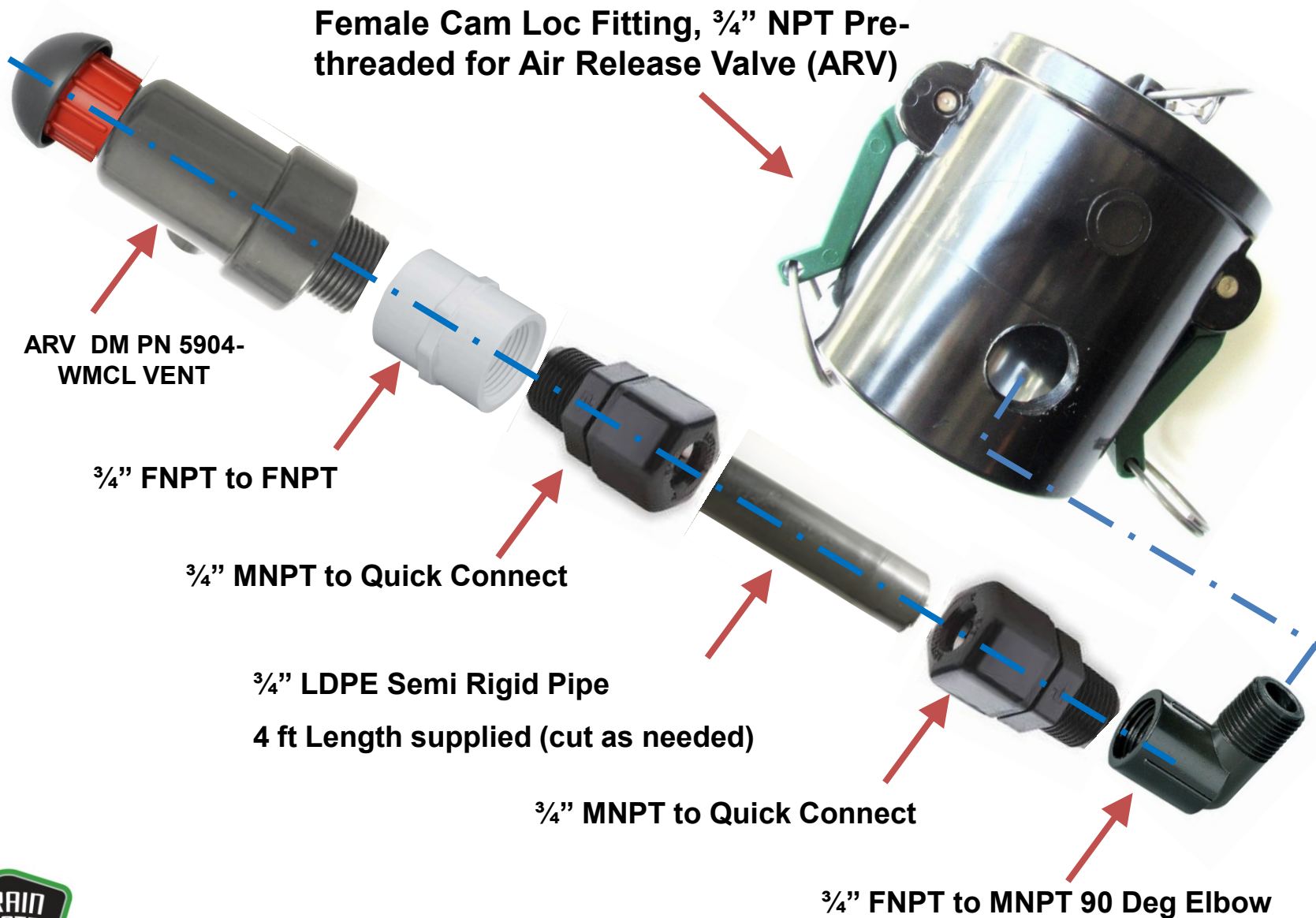
Caution: This installation is not difficult but please follow these basic instructions.
When working with ABS glue, you only have one shot at getting it right

Preparation, Tools and Materials

1. Select cutting tools such as small fine tooth hack saw or snip pliers.
2. Select finishing tools - a fine tooth file, a sanding pad and sand paper.
3. Clean, dry cloth and a pair of latex gloves.
4. Small can of ABS cement with applicator brush; all-purpose glue is OK provided ABS is included on label. **Do NOT use PVC, CPVC glue**



Vent Valve Assembly Kit – Expanded View



1. **Make sure your drain valves are closed;** remove the sewer cap and tether, clear any drip and dry out plumbing.
2. Cut off the four prongs used for the bayonet fitting
3. File or sand the cut off surfaces flush and smooth. Sand all around mating surface to prep. ready for later gluing step.

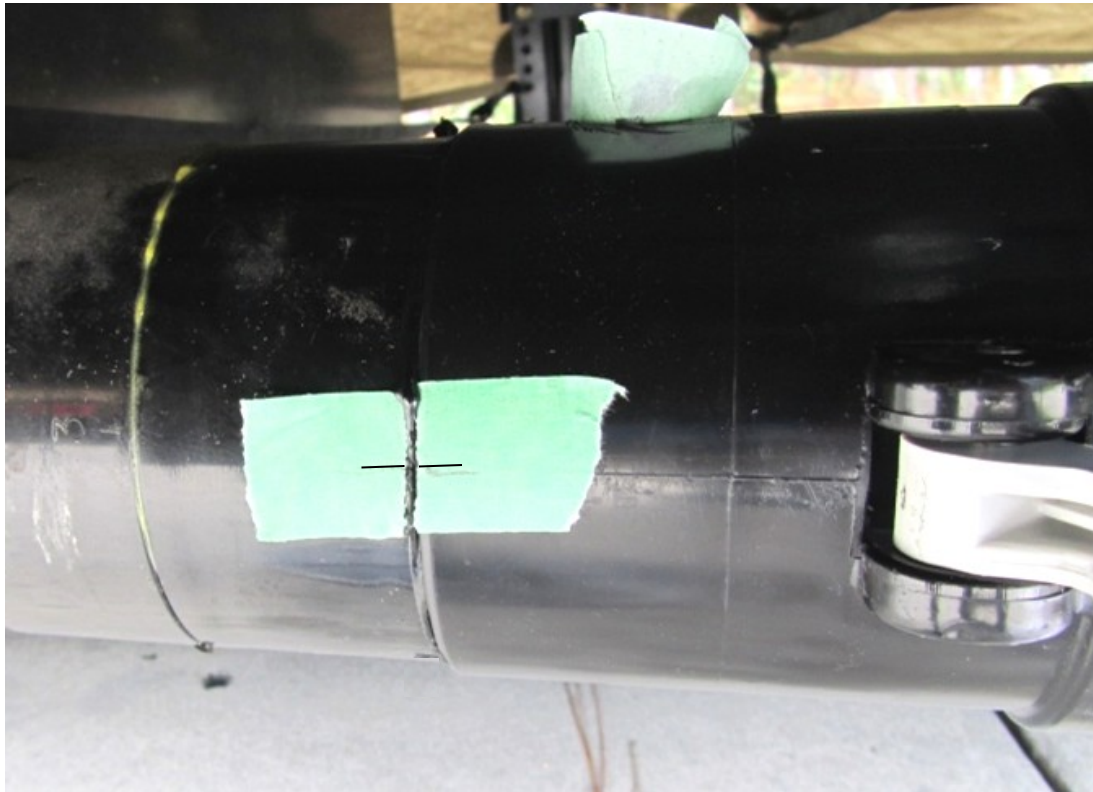


4. Temporarily place the Female Cam Loc fitting over the cut end and see it fits. Orient it so levers are reachable and fully extendable.
5. Mark the Air Release Valve (ARV) Fitting hole outline intercept on the cut pipe end – it will be roughly a partial ($\frac{1}{2}$) circle
6. Relief cutout for Air Release Valve Fitting allowing $\frac{1}{8}$ " over cut to clear the fitting threaded shank; smoothen out any burrs.



7. Dry fit the Female Cam Loc fitting over the cut end; align the cut out and ARV Fitting threaded hole. Dry fit the ARV Fitting to ensure it can be threaded without obstruction.
8. Alignment mark across with masking tape or white marker pen.

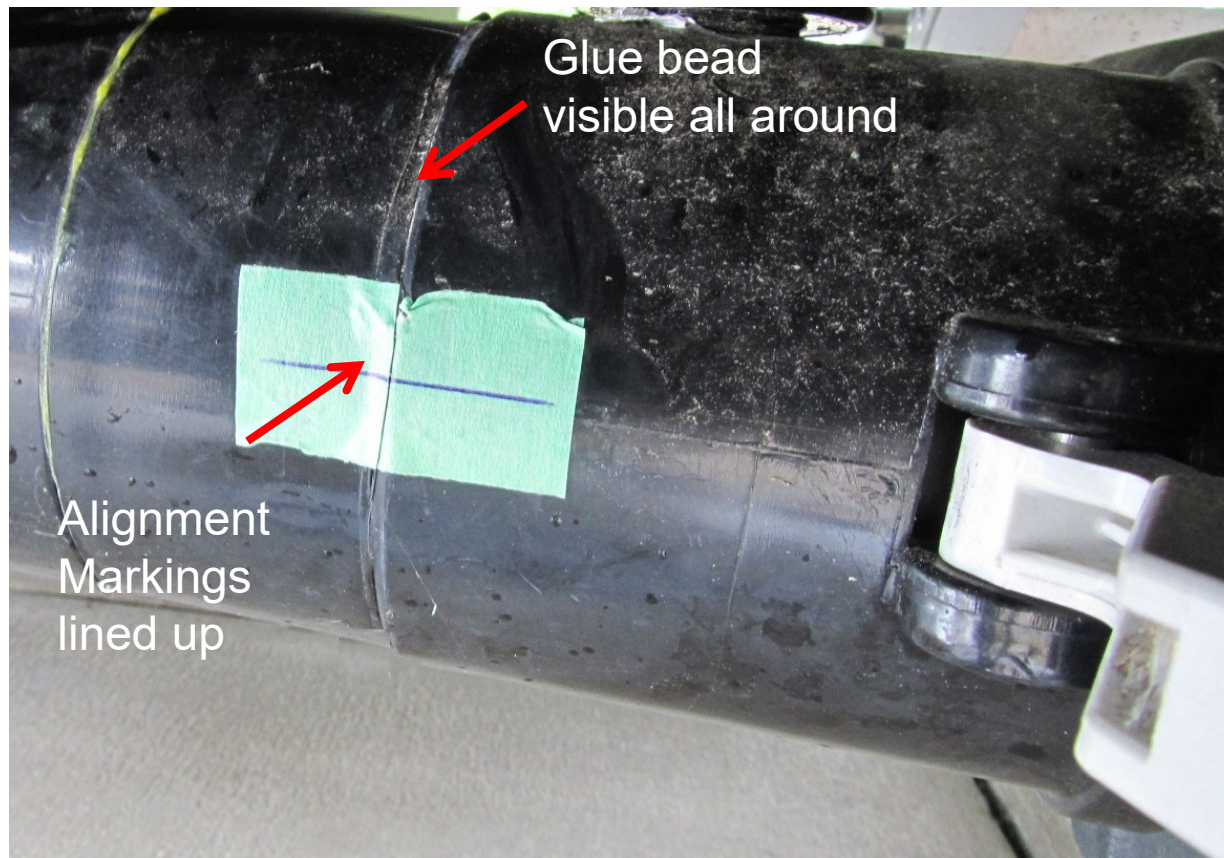
Important: *During gluing process this mark will be used to orient the fitting precisely. Try out the insertion and alignment process few times before actual gluing. It should be smooth and easy to orient. Extra sanding may be needed on the cut pipe end.*



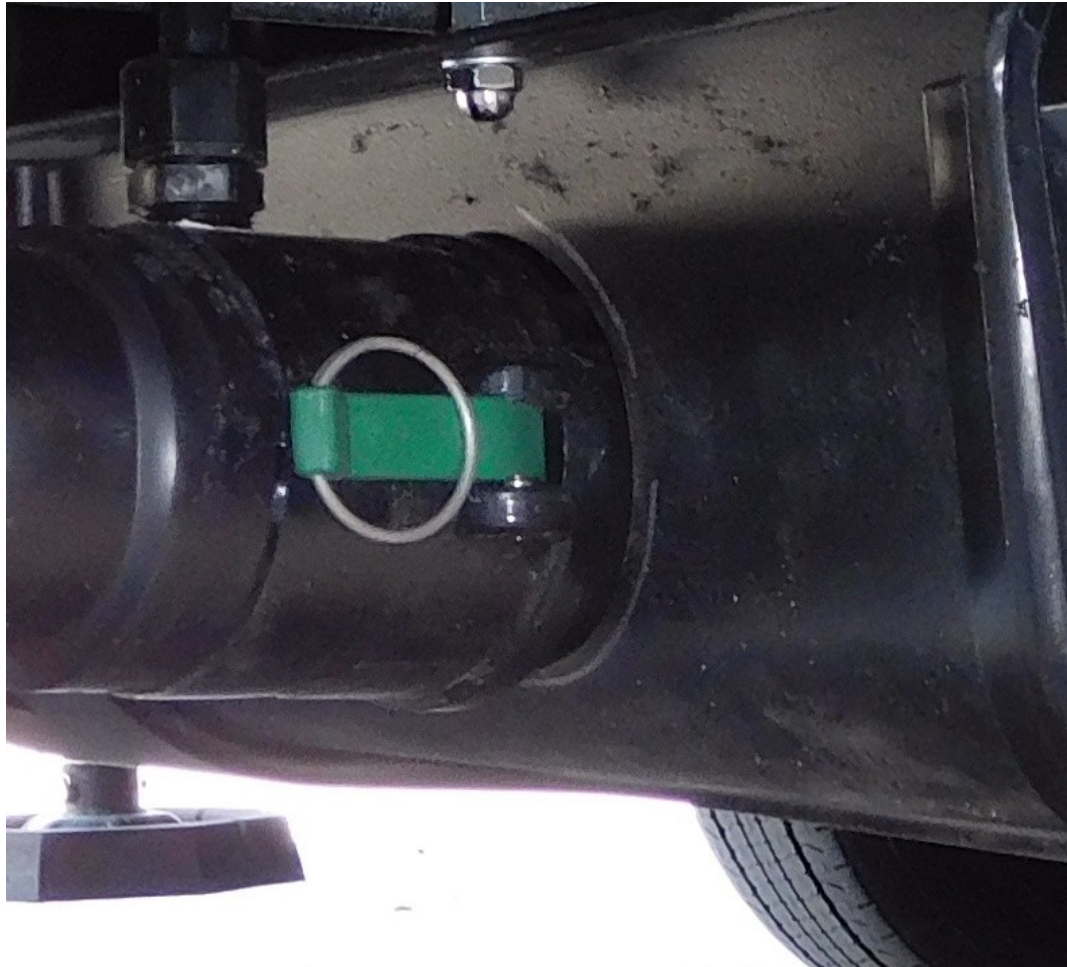
9. Remove the ARV Fitting
10. Use masking tape to protect $\frac{3}{4}$ " hole to prevent glue migration on threads



11. Remove the Female Cam Loc and sand the inside mating surface to prepare for gluing. Wipe all sanded surfaces with a clean dry cloth.
12. Apply a light film of glue to both the pipe cut end and the fitting sanded surface ensuring complete coverage
13. Insert the fitting, turning slightly each way to spread the glue, till fully inserted and alignment markings lined up
14. Allow a minimum of 30 Minutes cure time.



17. Install the hose and ensure everything fits well.
18. If the system is installed with Enclosure, hose cuff must be all around clear of side wall hole. Adjust enclosure mounting if required.
19. **Optional:** Hole side edge may be covered with edge beading or foam strip for extra protection.



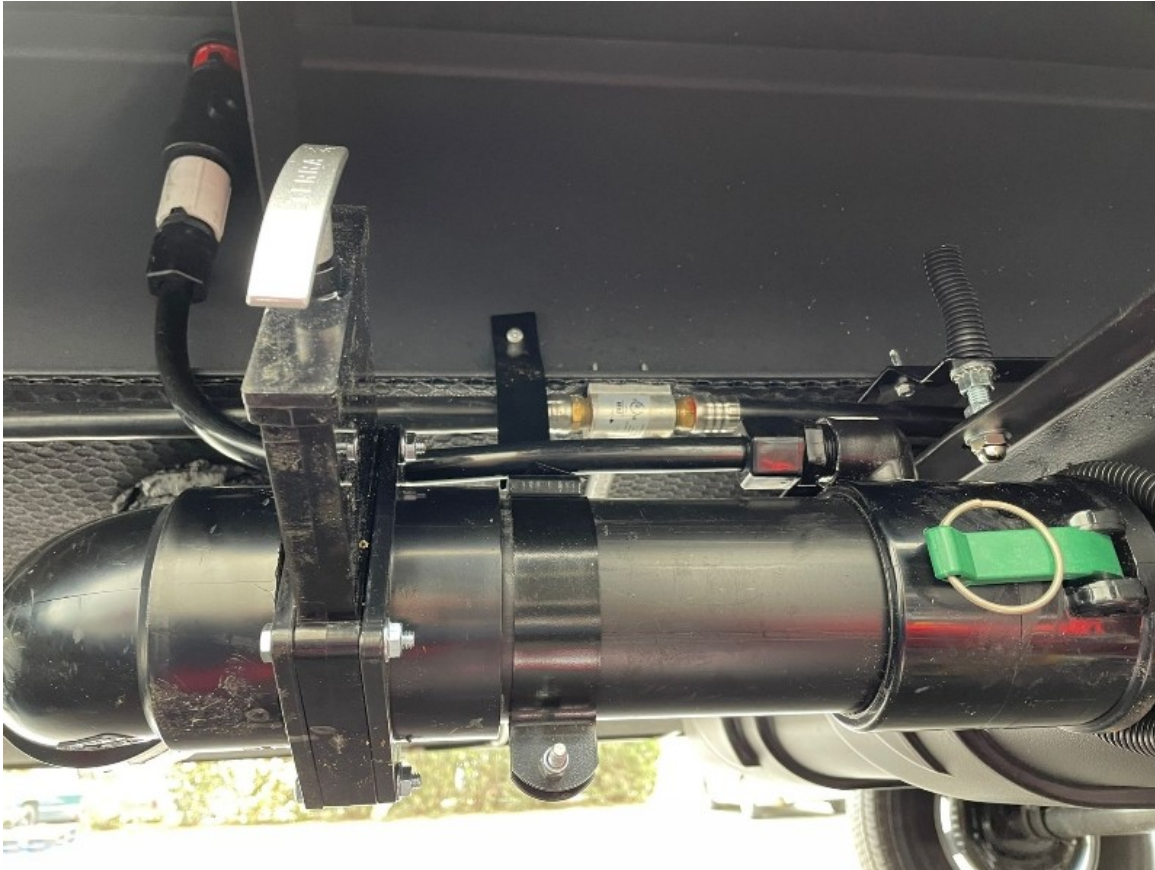
20. Select the ARV location as high as possible and outside; away from sensitive areas
21. Refer to expanded view page 3. Using a combination fittings, elbows etc. plan your PVC pipe routing - some examples are shown in the pictures. Depending on your ARV location additional fittings may be needed.
22. Remove the protective masking tape from the threaded hole
23. Install the $\frac{3}{4}$ " MNPT fitting (directly or via the 90 deg elbow) using Teflon tape or plumber's putty
24. Install the ARV on the $\frac{3}{4}$ " FNPT fitting at the end of the pipe. Make sure the ARV stays VERTICAL. In case of limited head room, locate as high as possible and outside the RV
25. Sticking the Air Release Valve into an opening in the belly pan is not advisable to prevent odors making way inside the RV and in case of any in-advertent leaks.

Refer to installation examples Pictures 1 through 6 - pages 11, 12 and 13



Pictures illustrating typical install conditions

1



2

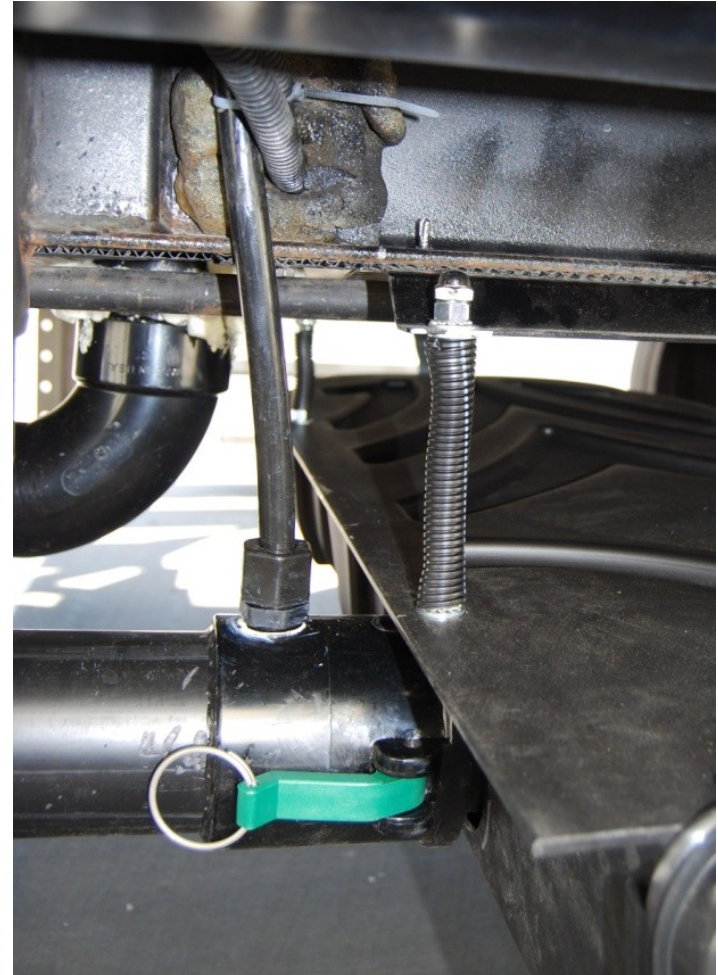


Pictures illustrating typical install conditions

3



4



Picture 5 and 6 below are examples of ARV located as high as possible in a limited head room situation

5



6



Congratulations on your successfully installing the Vent Assembly Kit for easy Extend and Retract of the Waste Master permanently connected hose system! Now you can enjoy the ultimate in convenience.

Questions? Comments? Need Help?

Call Toll Free: 877-787-8833

